

Cogent Wholesale Colocation



4101 Maple – Merchantville, NJ

For informational purposes only.

Cogent does not guarantee the information set forth and it may be changed without notice

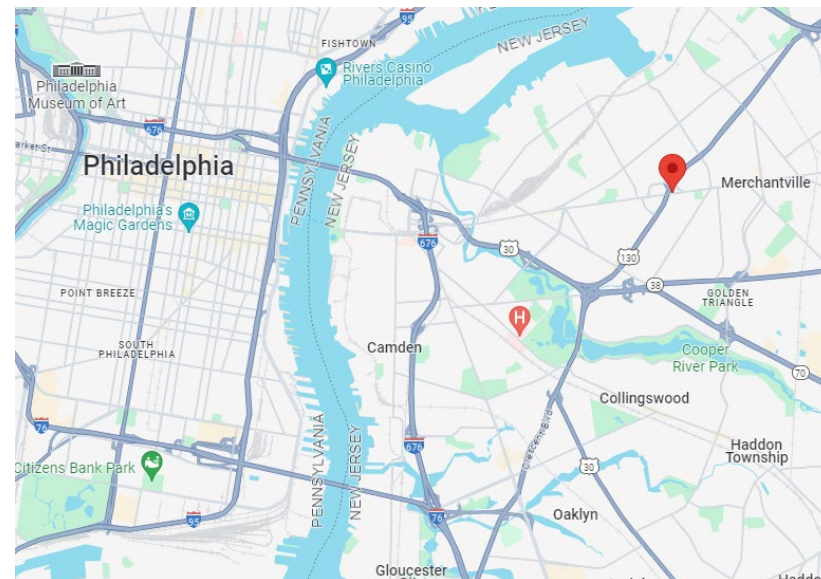


General Information

Conveniently located near outside Philadelphia and across the Delaware River, Cogent's Merchantville data center is a 39,601 sq ft secure facility with 2.50 MW of power. Facility sits on 2.6 acres zoned for C-1 (Commerical) use, allowing for potential expansion. Additional power availability being verified with utility provider, Public Service Electric & Gas (PSG&E).

Offering 2.08 MW of protected power and 9,000 sq ft of wholesale colocation space, this data center is ideally situated to serve customers in the Philadelphia area and throughout the Northeast region.

As a carrier neutral facility, available carriers include Cogent, Zayo, Verizon, Sunesys and Fibertech with the ability to bring in additional carriers and dark fiber providers as required.



Cogent Philadelphia – 4101 Maple Ave



Key Features

Facilities

- One 480v 3-phase utility feed – 3000amp
- Utility provider, Public Service Electric & Gas (PSG&E)
- Total 39,601 sq ft of space, 9,000 sq ft available for wholesale

Security

- Multiple cameras tied into software with recording and 24/7 monitoring capabilities
- Card reader access control system
- Gated facility - card swipe required for access

Fire Systems

- Vesda air sampling smoke detection system
- Fire suppression & detection system consists of smoke detectors and life safety devices

Key Features

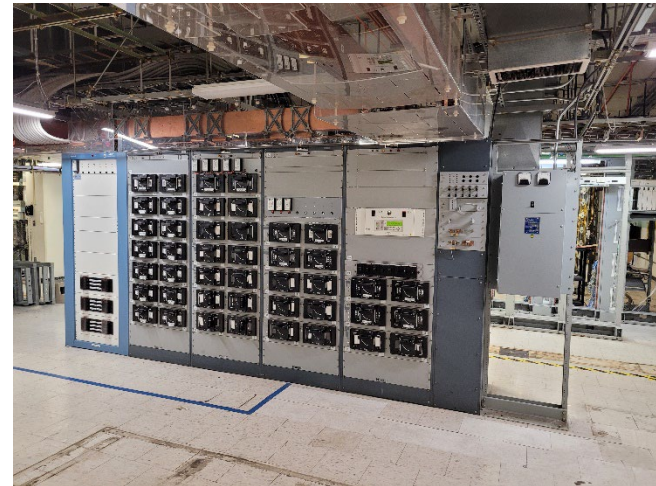
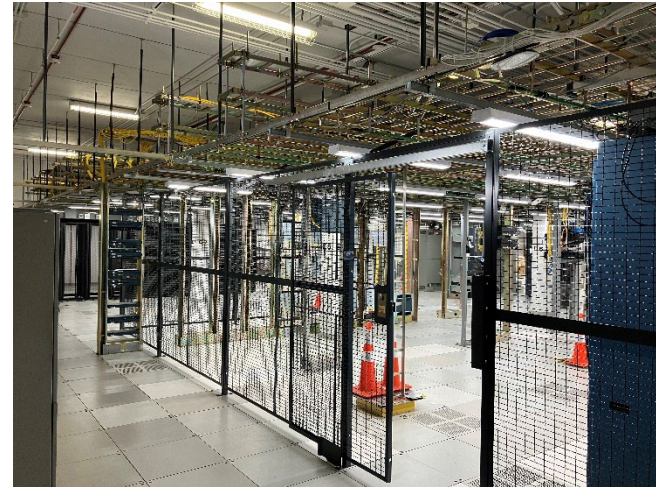
Generator Systems

- Two 1250 KW Diesel Powered Standby Generators each with 2000amp Automatic Transfer Switches
- Each standby generator is united with individual diesel fuel system including sub-base fuel tanks, separate fuels tanks with day tanks and fuel monitoring systems

HVAC

- Two 206 Ton Chillers and one 168-Ton Chiller (N+1 Redundancy), with three 30 HP Chilled Water Pumps (N+1 Redundancy)
- Two 154 Ton Chilled Water Air-Handling Units (N+1 Redundancy), seven 25-Ton Chilled Water Computer Room Units (N+1 Redundancy), one 5 Ton Chilled Water Air-Handling Units

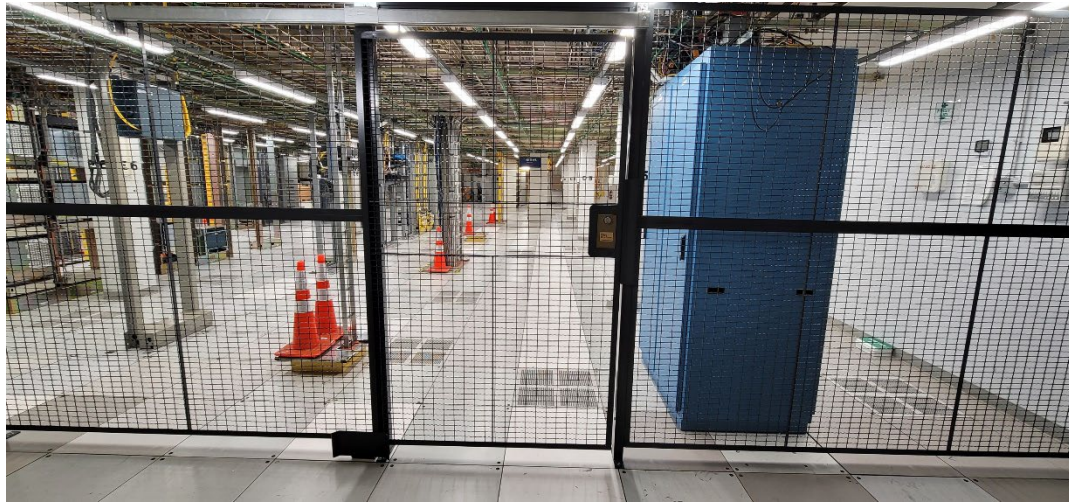
Photos



Cogent Philadelphia – 4101 Maple Ave



Photos



Cogent Philadelphia – 4101 Maple Ave



Cogent Data Center Opportunity

Why Cogent

- Flexible terms: Available to Purchase, Master Lease, or Wholesale Colocation
- Low capital investment compared to expense of building your own facility
- An institutionally built and owned data center
- Disaster proof - designed to withstand hurricane force winds and other natural disasters
- Professionally maintained: maintenance, inspections and replacements routinely performed
- Speed to market - our data center is ready for you to customize and move into
- Leverage the Cogent backbone for customer connectivity, or use other carriers
- Available wave services to provide low-latency connectivity to your other facilities

Want to learn more?

Contact Greg Davis

gdavis@cogentco.com

212-625-4778

Cogent Philadelphia – 4101 Maple Ave

